



JABSCO®

FLOJET®



**SUPERIOR SOLUTIONS
FOR YOUR PUMPING
PROBLEMS**



Specialist Pumps for Industrial Applications

Jabsco, Flojet and Rule are well-respected brand. Whilst many pumps used in industry are centrifugal pumps, this type has some limitations. Most pumps featured in the following pages utilise well-proven **Positive Displacement** pumping principles; their specialised features make them ideal not only for general pumping but also for those 'difficult applications', including:

- Lifting liquid from below the pump
- Transferring viscous liquids
- Hard and soft suspended solids
- Extreme temperatures
- High pressures
- Dry running
- Submerged pumps
- DC low voltage supply
- Restricted space

Rotary Lobe Pumps

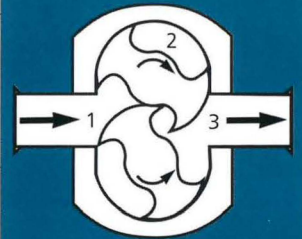
Jabsco Lobe pumps use two contra-rotating rotors to create a steady, positive pumping action. But, as the rotors never touch each other or the pump case, Jabsco hygienic Lobe Pumps will not contaminate or degrade your fluids. What comes out is what goes in; no more - no less.

- **Hygiene Standards:** Crevice-free designs, external gears & bearings, together with all-stainless-steel contact parts & high surface finishes, surpass users' hygiene and cleanability expectations.
- **Reliability:** Lobe pumps offer long-term dependability with minimal cost of servicing and replacement parts for the process engineer who relies on his pumps.
- **Application Capability:** Lobe pumps will generate the highest pressures and flow rates delivered by any of the Jabsco product range. Highly viscous, shear-sensitive liquids and suspended soft solids will not be degraded.



How do they work?

- 1 Fluid is drawn into the pump and completely fills the space between the rotors
- 2 Held between the rotor lobes and the pump case, closed cells of fluid are carried smoothly through the pump
- 3 The intermeshing rotor lobes positively displace the fluid volume, generating flow and overcoming the discharge pressure



Sliding Vane Pumps

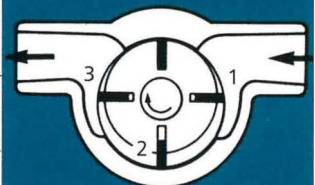
These Jabsco pumps utilise the well-proven sliding vane principle. Wherever the application demands a reliable pump with no elastomeric moving parts, a sliding vane pump is ideal, especially for transfer of diesel fuel and hydraulic oils.

- **Durable:** Heavy-duty construction in wear-resistant, long life materials. Most models have been independently vibration tested.
- **Wide Temperature Range:** Both metallic and thermoplastic parts are carefully designed to work consistently, even at low temperatures.
- **Self-priming:** Pumps instantly with dry suction lifts up to 5m.
- **Field-proven:** Many, many thousands of Jabsco pumps are working every day in the arduous environments of construction machinery, quarrying, heavy vehicles and road building.



How do they work?

- 1 The vanes create a partial vacuum for near-instant dry self-priming
- 2 As the rotor rotates, each successive vane draws in and carries more liquid from the intake to the discharge port
- 3 The vanes follow the shape of the eccentric pump body and force liquid out the discharge port



Jabsco, Flojet and Rule pumps are widely specified and used by:

- Construction Equipment manufacturers
- Agricultural Sprayer builders
- Floor Cleaning Machine suppliers
- OEM specialist machine designers
- Food & Pharmaceutical processors
- Dairy, beverage and soft drinks producers
- Chemical suppliers and users
- Water treatment & purification specialists
- All sectors of general industry
- Contractors, consultants & pump advisors
- Marine engineers & boat builders



Flexible Impeller

The flexible impeller pump principle was invented and patented by Jabsco in the 1930's. It continues to be used around the world in hygienic, industrial and chemical applications that demand its special features at an economic price.

- **Versatile:** The flexible impeller pump combines the class-leading dry self-priming capability of a positive displacement pump with the general transfer abilities of a centrifugal pump. The pump can be mounted at any angle and most models will pump in either direction with equal efficiency.
- **Difficult Liquids:** It will handle thin, shear-sensitive and viscous liquids and can easily pass both soft and hard solids in suspension.
- **Self-priming:** Pump can be mounted above the liquid level and will fill the inlet pipe every time. Dry suction lifts up to 4.5m (15ft) and up to an outstanding 8m (25ft) when wetted.
- **Simplicity:** Only one moving part, a tough, long-life, wear-resistant flexible impeller.



How do they work?

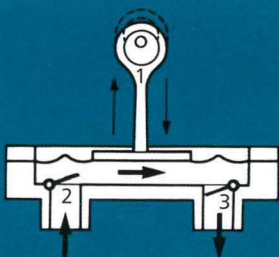
- 1 Flexible impeller blades create a partial vacuum for near-instant dry self-priming
- 2 As the impeller rotates, each successive blade draws in liquid and carries it from intake to outlet port
- 3 As the flexible impeller blades contact the offset cam they bend with a gentle squeezing action that provides a continuous, pulsation-free flow



Diaphragm Pumps

Flojet and Jabsco diaphragm pumps are reciprocating positive displacement pumps. They have no rotating shaft seal and therefore are technically seal-less and most designs have no metallic parts in liquid contact. This widens their scope of application as they will handle many corrosive, hazardous and non-lubricating liquids.

- **Choice:** Manual, low and high-voltage electric and air-operated versions meet almost every customer's requirements. Electric pumps also have optional automatic control switch and by-pass valve for improved application matching.
- **Self-priming:** Dry vertical lift from 2.4m (8ft) up to an outstanding 8.5m (28ft).
- **Dry Running:** Diaphragm pumps can be run dry for extended periods with no damage even when the liquid supply is exhausted.



How do they work?

- 1 The diaphragm, pulled back by the movement of a piston, creates a partial vacuum to self-prime the pump
- 2 Fluid is drawn into the pump chamber through the inlet valve whilst the vacuum closes the outlet valve
- 3 Forward movement of the diaphragm pressurises the liquid, closing the inlet valve and opening the outlet valve through which liquid is expelled under pressure



Industrial Flexible



Flexible impeller pumps are versatile, compact and easy to use. They will handle low and high-viscosity liquids and can pass soft and hard solids and abrasives with minimal damage. Jabsco flexible impeller pumps frequently offer a more suitable yet less expensive alternative to many other pump types. Available in a variety of materials and designs, so it is easy to find the right FIP for a diverse range of applications including chemicals, oils and lubricants, salt-water recirculation, container emptying & filling and polyelectrolyte transfer.

28 SERIES INDUSTRIAL PEDESTAL PUMPS

Application Capability:

5 Models: flows from 65 to 520 litres/min
Differential Pressures up to 5.0 bar
Viscosities from 1 to 50,000 cP
Fluid Temperatures 0 to 90°C
Self priming up to 4.5 metres

- Chemical, finishing, production and industrial sectors
- All 316 grade Stainless Steel parts in fluid contact
- Foot-mount to couple to gearbox or belt-drive
- Chemical-resistant rubber impeller
- Long-life mechanical shaft seal
- Replaceable wearplates resist abrasion
- Undamaged even by small hard particles

28 SERIES INDUSTRIAL MOTOR-MOUNT PUMPS

Application Capability:

5 Models: flows from 65 to 520 litres/min
Differential Pressures up to 3.0 bar
Viscosities from 1 to 4,000 cP
Fluid Temperatures 0 to 90°C
Self priming up to 4.5m

- Chemical, finishing, production and industrial sectors
- All 316 grade Stainless Steel parts in fluid contact
- Close-coupled to motor (unibloc); compact and economical
- Chemical-resistant rubber impeller
- Long-life mechanical shaft seal
- Replaceable wearplates resist abrasion
- Undamaged even by small hard particles

NON-METALLIC PUMPS

Application Capability:

4 Models: flows from 6 to 135 litres/min
Differential Pressures up to 2.5 bar
Viscosities from water up to 10,000 cP
Fluid Temperatures 0 to 90°C
Self priming up to 3.5 metres

- Electroplating, photo-processing, chemical transfer sectors
- High-resistance thermoset plastic pump body
- No metal parts in contact with fluid (most models)
- Chemical-resistant rubber impeller
- Easy to clean & service



Impeller Pumps

DRY RUN UTILITY PUMPS

- Multi-purpose AC motorised bronze pumps
- Integral protection against dry-run for up to 30 mins
- Carry handle on all larger pumps
- Compact, versatile and always ready to use
- Self-priming even from dry start-up
- Quick and easy servicing by unskilled people
- Widely used in metalworking factories, service industries & agriculture

Application Capability:

3 Models: flow rates 20, 40 or 80 litres/min
Discharge Pressures up to 3.0 bar
Handles water & viscous fluids up to 500 cP
Undamaged by hard solids to 4mm diameter
Fluid Temperature 0 to 90°C
Self-priming up to 3m



BRONZE FOOT & MOTOR-MOUNT PUMPS

- Marine-grade corrosion resistant bronze and stainless-steel parts
- Especially for salt-water, oils & mildly-aggressive chemicals
- Replaceable wearplates, end covers and cams resist abrasion
- Foot-mounted, or fitted to IEC standard metric motors

Application Capability:

7 Models: flows from 2 to 480 litres/min
Outlet Pressures up to 4.0 bar
Viscosities from water up to 10,000 cP
Undamaged by hard solids to 4mm diameter
Fluid Temperature range 0 to 90°C
Self-priming up to 4.5m

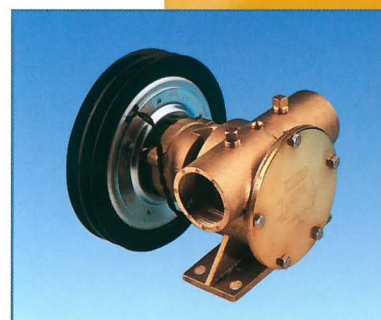


BRONZE PULLEY AND CLUTCH-DRIVE PUMPS

- Marine-grade corrosion resistant bronze and stainless-steel parts
- Especially for salt-water, oils & mildly-aggressive chemicals
- Replaceable wearplates, end covers & cams resist abrasion
- Belt-drive self-adjusting manual clutch with 'double-life' feature
- 12 or 24V DC electromagnetic clutch option, or fixed pulley drive

Application Capability:

4 Models: flows from 20 to 520 litres/min
Outlet Pressure up to 4.0 bar
Viscosities up to 10,000cP
Undamaged by hard solids to 4mm diameter
Fluid Temperature range 0 to 90°C
Self-priming up to 4.5m



SMALL 12 & 24 V DC MOTORISED PUMPS

- Unrivalled range with DC motors
- High-quality permanent-magnet motors
- Low-voltage safer in wet areas
- Self-priming even from dry start-up
- Especially for use on specialist vehicles & mobile equipment
- Run-dry protection option on larger models
- Macerator version to handle soft solids e.g. food waste

Application Capability:

3 sizes: flows from 7 to 50 litres/minute
Discharge pressures up to 2.5 bar
Handles water & viscous fluids up to 500 cP
Undamaged by small hard debris
Self-priming up to 2.4m



Jabsco Drum Pumps

The easiest, most reliable and economical way to transfer or sample liquids from drums, vats and carboys. Jabsco's container emptying pumps offer many options of tube materials which can handle a wide range of liquids found in chemical, metal finishing, food and general manufacturing industries. The heavy-duty tubes are driven by either an electric motor featuring the latest safety cut-out switch or a compressed-air motor for areas where electricity is unavailable or would be unsafe.

JABSCO D100 DRUM PUMPS

- Transfer highly corrosive liquids, acids, solvents and food ingredients
- Rugged construction pump tubes in 4 material options:
 - Polypropylene
 - 316 grade Stainless Steel
 - Kynar (PVDF)
 - Hygienic Stainless Steel to US FDA & USDA requirements
- Seal-less design for longer life
- Self aligning quick release coupling arrangement
- Available in 3 tube lengths: 0.7m, 1.0m & 1.2m
- Pump tubes are easily coupled to and dismantled from both Drive Options

AC FAN-COOLED HEAVY DUTY MOTOR:

- CE marked with full RFI suppression
- Generous 5 metre cable
- Large, sealed rocker switch with built in safety cut-out:
 - Switches off if power is interrupted, cannot restart unintentionally
 - Also functions as automatic overload cut-out
- Ergonomically-designed grip suitable for a gloved hand
- Single-phase motor available in 2 voltages:
 - 115 V 50/60 Hz
 - 230V 50 Hz with fitted UK 3-pin plug or European plug

COMPRESSED AIR MOTOR:

- Rotary air motor complete with control valve
- Rugged metal-shrouded exhaust muffler
- Suitable for use in hazardous environments*

FULL RANGE OF ACCESSORIES AVAILABLE INCLUDING:

- Grounding (earthing) kit
- Trigger dispensing nozzle
- Inlet strainers
- Wall storage bracket
- Drum bung-hole adaptor

Application Capability:

Highest Flow Rates: 100 litres/minute

Working temp from 0 right up to 93°C

Fluids from water up to 750 cP viscosity

Can run without liquid for 30 minutes

* When installed correctly in accordance with all product data sheets and installation instructions



Hygienic Flexible Impeller Pumps

Jabsco hygienic flexible impeller pumps handle low and high-viscosity liquids, gels and pastes and can pass suspended soft and hard solids with minimal damage. The output flow is smooth, steady and totally pulsation-free and their gentle pumping action will not break down shear-sensitive or fragile liquids. Designed to be cleaned in place or easily strip-cleaned, Jabsco flexible impeller pumps frequently offer a more suitable and cost-effective alternative to many other pump types.



28 SERIES HYGIENIC PEDESTAL PUMPS

- Foot-mounted to couple to gearbox or belt-drive
- Hygienic rubber impeller leaves no taste or odour
- Long-life mechanical shaft seal
- All 316 grade Stainless Steel parts with high surface finish
- Used in Food, Dairy, Beverage, Healthcare & Cosmetics sectors

Application Capability:

5 Models: flows from 65 to 520 litres/min
Differential Pressures up to 5.0 bar
Viscosities from 1 to 50,000 cP
Fluid and CIP Temperatures 0 to 90°C
Self priming up to 4.5 metres
Certified to US 3A sanitary standard 02-09



28 SERIES HYGIENIC MOTOR-MOUNT PUMPS

- Used in Food, Dairy, Beverage, Healthcare & Cosmetics sectors
- Close-coupled to motor (unibloc); compact and economical
- Hygienic rubber impeller leaves no taste or odour
- Long-life mechanical shaft seal
- All 316 grade Stainless Steel parts with high surface finish

Application Capability:

5 Models: flows from 65 to 520 litres/min
Differential Pressures up to 3.0 bar
Viscosities from 1 to 4,000 cP
Fluid and CIP Temperatures 0 to 90°C
Self priming up to 4.5 metres
Certified to US 3A sanitary standard 02-09



TANKERMASTER MILK TANKER PUMPS

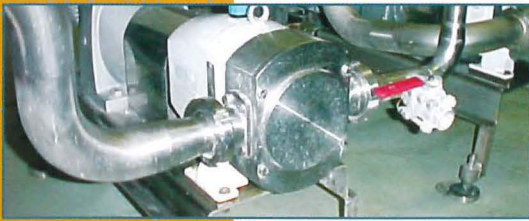
- Specialised pumps for Milk Tanker loading at dairy farms
- Bulkhead-mounted for hydraulic drive
- Quick-release end-cover for winter drain-down and inspection
- By-pass option for effective CIP without the need to run the pump

Application Capability:

2 Models: loading up to 520 and 680 litres/min
Fluid and CIP Temperatures 0 to 90°C
Certified to US 3A sanitary standard 02-09
Self-priming from dry up to 3m



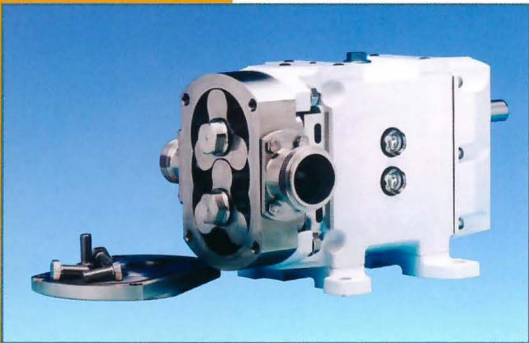
Rotary Lobe Pumps



Jabco's range of rotary lobe pumps incorporates the very latest in hygienic design concepts in order to fulfil your ever-increasing expectations for improved cleanability, hygiene and sterilisability. Widely used in demanding continuous and batch processes, wherever product quality and integrity are paramount.

24 SERIES LOBE PUMPS

- **RUGGED DESIGN:** The solid construction of these pumps ensures maximum shaft stiffness to minimise premature pump failures.
- **LOW MAINTENANCE:** The rotors are fully interchangeable avoiding the need to retime which is a problem with many other rotary lobe pumps.
- **FLEXIBLE:** The 24 Series utilises 'bolt on' features which allow quick and easy interchange of parts.



Application Capability:

Field-proven design uses 3-lobe rotors
10 models: flows from 36 to 2100 litres/min
Differential Pressures up to 15 bar
Viscosities from 1 to 1,000,000 cP
Working Temp from -40 to +200°C
316-grade austenitic stainless-steel contact parts
Optional 2-lobe and rubber-covered rotors
Mechanical shaft seals, gland packings, or O-ring seals
Certified to US 3A sanitary standard 02-09

Hy~Line LOBE PUMPS

- **SUPER HYGIENIC:** Fully conforms to 3A Hygiene Standards. All elastomers meet US FDA requirements. Versions available certified to EHEDG (European Hygienic Equipment Design Group) CIP & SIP protocols.
- **WIDE APPLICATION RANGE:** High efficiencies, high pressure ratings and compact size mean that even extreme applications can be satisfied with smaller pumps.
- **LOW MAINTENANCE COSTS:** Fluid contact parts including product seals are fully accessible without removing the pump casing. Makes inspection, servicing and maintenance quick and easy. Bi-wing 'scimitar' rotors eliminate the need to synchronise or 'time' the pump shafts.



Application Capability:

Modern, leading-technology design uses 'scimitar' rotors
Range of models with max flow of 1809 litres/min
Differential Pressures up to 15 bar
Viscosities from 1 to 1,000,000 cP
Working temperatures from -30 to +140°C
316-grade stainless-steel, optional low-carbon 316L
Front-loading seals, optional O-ring and multi-lip seals
High CIP cleanability & certified to US 3A standard 02-09

Ultima / 55 SERIES LOBE PUMPS

- **ULTIMATE HYGIENIC STANDARDS:** Tested and approved to the clean-in-place and sterilisability protocols of EHEDG (European Hygienic Equipment Design Group) and utilising only materials which meet US FDA title 21 section 177.2600.
- **CLEANER BY DESIGN:** Totally crevice-free construction with external rotor retention and gasket type joints in place of 'O' rings reduce the number of potential product entrapment areas. Larger models feature all-stainless-steel construction.
- **LOW PRODUCT SHEARING:** The rotor design ensures high volumetric efficiency on low viscosity products resulting in low shear rates and low product damage.



Application Capability:

Ultra-hygienic design for the most demanding processes
9 models: flows from 16 to 684 litres/min
Differential Pressures up to 20 bar
Viscosities from 1 up to 1,000,000 cP
Working temperatures from -30 to +140°C
Bi-wing 'scimitar' rotors or 5-lobe rotors
Front-loading high-integrity shaft seals
Crevice-free design, no O-rings in fluid contact
Certified to EHEDG CIP & SIP protocols



APPLICATIONS

Food Processing:

Ingredients, sauces, condiments
Milk, cheese, curds, yoghurt, cream
Brewing and wineries
Soft drink concentrates, syrups
Yeast, bakery doughs, fillings, confectionery, enrobing

Chemicals & Industrial

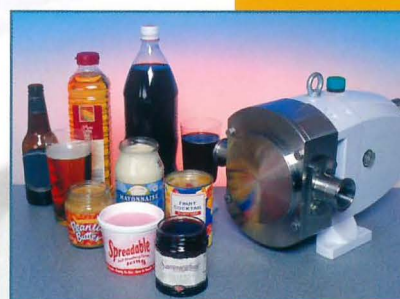
Paints, inks & dyes
Adhesives & resins
Sealants & polymers
Paper coatings & additives

Pharmaceuticals:

Creams & lotions
Tablet coatings
Buffer solutions
Filtration & Chromatography
Aseptic processes
Fermentation feed & harvest

Personal Care:

Shampoos, soaps, & gels
Cosmetics
Skin creams & lotions
Household cleaning chemicals



Diesel Refuelling Pumps



Jabsco's range of vehicle-mounted fuel transfer pumps are widely used by most of the major construction machinery manufacturers. Self-priming, fast, convenient and environmentally-responsible, these pumps deliver trouble-free fuel transfer from drums and mobile tanks. Their reliability has been proven internationally over many years in the tough environments of construction sites, forestry equipment, agricultural machinery, generator sets and even Arctic expeditions.

23870 REFUELLING PUMPS



Application Capability:

Flow rate 35 litres/minute
Maximum pumping head 6 metres
Self-priming up to 2.8 metres of diesel fuel
Temperature range -30°C up to +40°C
Economical price for machines up to 13 tonnes
Fills a 200 litre tank in only 6 minutes

- IP55 water-protected motor
- Fully vibration tested
- 12 or 24V DC permanent magnet motor
- Intermittent run to 35 mins
- Optional on/off switch, fuse & 19 mm hose adaptors
- Full range of installation kits for OEM customers

VR050 REFUELLING PUMPS



Application Capability:

Flow rate 50 litres/minute
Maximum pumping head 10 metres
Self-priming up to 3.0 metres of diesel fuel
Temperature range -30°C up to +40°C
For machines up to 30 tonnes
Fills a 500 litre tank in only 10 minutes

- 12 or 24V DC motor with thermal overload protector, IP55 water protected and corrosion-resistant case
- Optional on/off switch, fuse & 25 mm hose adaptors
- Full range of installation kits for OEM customers
- Continuously rated
- Fully vibration tested

VR100 REFUELLING PUMPS



Application Capability:

Flow rate 100 litres/minute
Maximum pumping head 15 metres
Self-priming up to 5.0 metres of diesel fuel
Temperature range -30°C up to +50°C
Premium for machines up to 150 tonnes
Fills a 1500 litre tank in only 15 minutes

- 24V DC motor with thermal overload protector, IP55 water protected & corrosion resistant
- Optional on/off switch, fuse & 32 mm hose adaptors
- Full range of installation kits for OEM customers
- Continuously rated
- Fully vibration tested

ACCESSORIES

Auto shut-off controller – prevents tank over-fill
 Non-kink diesel hose – flexible even at -20°C
 Inlet strainer – protects pump and helps keep fuel clean

Foot valve/check valve – prevents run-back, minimises spills
 Shrouded inlet strainer – protected against damage
 By-pass valve for VR050 – to use with trigger nozzle
 Full range of hose adaptors, elbows, seals & clips

All the pumps shown on this page are also suitable for Kerosene, Paraffin and light oils up to 100 cSt (500 Saybolt Universal) viscosity. SAFETY: Do not use for pumping petrol, gasoline or products with a flash point below 37°C

Diesel Fuel & Oil Pumps

Fuelmaster 40 is the ultimate portable diesel fuel transfer pump. Supplied fully assembled, this innovative accessory can be operated on the drum-top, hand-held using the convenient carry-handle, or wall mounted. Fuelmaster 40 delivers fast turn-around, reliability, convenience and value. Ideal for refuelling back-hoe loaders, agricultural machinery, forestry equipment, generators and all small plant.



FUELMASTER 40 REFUELLING SYSTEM

- Jabsco sliding-vane pump (also available separately)
- Reliable 12V or 24V DC permanent-magnet motor
- Thermal overload protection & in-line fuse
- Non-kink hose flexible even at -20°C
- Built-in pressure-limiting by-pass valve
- Inlet strainer and heavy-duty hose storage
- Robust dispensing trigger-nozzle
- Optional digital flow meter

Application Capability:

Transfers 100 litres of diesel fuel in 3 mins
Maximum pumping head 6 metres
Self-priming up to 2.5 metres of diesel fuel
Operating range -20°C up to +40°C
Running time up to 30 minutes



23590 HYDRAULIC OIL PUMP

- Minimise spills and recontamination
- Suitable for oils up to 150 cSt (750 Saybolt Universal)
- Jabsco sliding-vane type pump
- Reliable 12V or 24V DC permanent-magnet motor
- Ideal for emptying and re-filling hydraulic oil tanks before and after servicing and repairs to construction, forestry & farm machinery and power packs

Application Capability:

Transfers 100 litres of hydraulic oil in 4 mins
Maximum differential pressure 1.5 bar
Self-priming up to 1.8m of hydraulic oil
Operating range -20°C up to +40°C
Running time up to 30 mins



17800 PORTAQUICK OIL CHANGER

- Empty hot engine oil through the dipstick hole
- Ideal for engines in inaccessible locations
- Minimise spills & environmental damage
- Off/On/Reversing switch; use the pump to empty the container

Application Capability:

12V DC permanent-magnet motor
2.4 metre cable with battery clips
Dipstick probe 1m long x 6.3 mm diameter
Generous 13 litre oil-catch container



Diaphragm Pumps



Flojet & Jabsco diaphragm pumps combine the benefits of a self-priming positive-displacement pump with excellent chemical-resistance. They are compact, inexpensive, seal-less and able to run dry for long periods. Commonly used by OEM equipment manufacturers in applications as diverse as: agricultural spraying - floor cleaning machines - automotive servicing and washing equipment - road rollers - street sweepers - medical equipment - industrial transfer.

FLOJET DUPLEX II PUMPS



Application Capability:

Maximum flows up to 8.3 litres/minute
Discharge pressures up to 7 bar
Self-priming up to 2.4 metres
Temperature range 0 to 60°C
12, 24 & 36V DC, 115 & 230V AC motors
Handles water & viscous liquids to 250 cP

- Chemical-resistant polypropylene pump head
- Latest-technology internal check-valves for reliable self-priming
- Continuous running at operating pressures
- Choice of elastomers for maximum chemical compatibility
- Internal bypass gives unique performance curve
- Optional pressure-switch control stops & starts pump

FLOJET LF LOW FLOW PUMPS



Application Capability:

Maximum flows up to 3.8 litres/min
Discharge pressure up to 2.4 bar
Self-priming up to 0.75 metres
12 & 24V DC permanent-magnet motors
Temperature range 0 to 43°C
Handles water & viscous liquids to 100 cP

- Ultra compact 2-chamber pump - delivers flow & pressure comparable to much larger pumps
- Low current draw, perfect for battery-powered applications
- Chemical-resistant polypropylene pump head
- Choice of elastomer materials
- Built-in thermal protector
- Optional pressure-switch control, on/off switch, in-line fuse

FLOJET QUAD PUMPS



Application Capability:

Maximum flows up to 19 litres/minute
Discharge pressures up to 3.2 bar
Self-priming up to 2.4 metres
12, 24 & 36V DC, 115 & 230V AC motors
Temperature range up to 54°C
Handles water & viscous liquids up to 250 cP

- Four-piston design delivers higher flow rates
- Chemical-resistant polypropylene pump head
- Choice of elastomer materials to suit many chemicals
- Quick-connect plug-in pipe fittings for easy installation
- Optional pressure-switch control stops & starts pump

JABSCO DC QUAD PUMPS

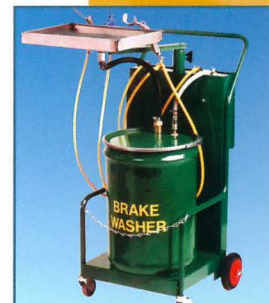


Application Capability:

Maximum flows up to 15 litres/minute
Discharge pressures up to 2.8 bar
Self-priming up to 2.4 metres
12 & 24V DC permanent-magnet motors
Temperature range up to 54°C
Handles water & viscous liquids up to 250 cP

- Long-running heavy-duty motors with built-in thermal overload
- Optional 'Commercial-Duty' DC motor for continuous running
- Chemical-resistant polypropylene pump head
- Optional pressure-switch control stops & starts pump
- Choice of elastomer materials

Flojet air-operated double-diaphragm pumps are compact and highly competitive yet offer all the benefits of much larger pumps of this type. They are self-priming from dry, seal-less for long dry-running without damage, stall-free and are truly demand-controlled. If the outlet is restricted the pump adjusts its flow to match; when the outlet is closed, the pump stops and consumes no energy then restarts automatically on demand.



FLOJET 5100 SERIES PUMPS

- Variable capacity from zero to maximum flow
- No risk of electric shock
- Can handle flammable liquids*
- No pressure relief or bypass valve required
- Variety of elastomers for valves & diaphragms

Application Capability:

Maximum flows up to 7.6 litres/minute
Discharge pressures up to 5.5 bar
Excellent self-priming up to 9.0 metres
Temperature range up to 50°C
Handles water & viscous liquids up to 250 cP

* When installed correctly in accordance with all product data sheets and installation instructions



FLOJET G57 SERIES PUMPS

- Highest flow rates for any air-driven pump of comparable size
- Quick-connect plug-in liquid & air fittings for easy installation
- Leak resistant radial seals & inset moulded diaphragms
- Quiet operation with large exhaust muffler
- Variable capacity from zero to maximum flow
- Choice of elastomers for valves & diaphragms

Application Capability:

Maximum flows up to 26.5 litres/minute
Discharge pressures up to 7 bar
Self-priming to 4.5m
Temperature range up to 50°C
Handles water & viscous liquids up to 1,500 cP



FLOJET G57 DUAL & QUATRO PUMPS

- Quick connect plug-in manifold for easy installation and removal of pumps
- Variable capacity from zero to maximum flow
- Can run dry without damage
- Available with Santoprene or viton elastomers
- Leak resistant radial seals and inset moulded diaphragms

Application Capability:

Maximum flow: Dual: 38 litres/minute
Maximum flow: Quatro: 76 litres/minute
Discharge pressure up to 7 bar
Self priming up to 4.5m
Temperature range up to 50°C
Handles water & viscous liquids up to 1,500 cP



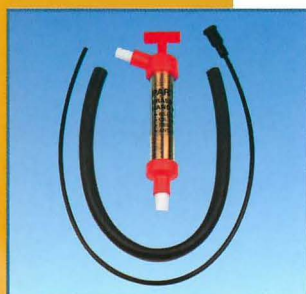
General Purpose Pumps

Jabsco's industrial pump range is completed by hand, foot and electrically-operated pumps. Manual pumps are ideal where no power is available and are portable; they find diverse applications in factories, on farms and with contractors, plumbers and utilities workers. Jabsco centrifugal pumps are driven by long-life DC motors and are widely used on commercial and public-service vehicles for heating & cooling system recirculation, wash-down and anywhere that a simple, reliable DC pump is required.



HAND DIAPHRAGM PUMPS

- Single & double-acting high performance hand pumps
- Self-priming up to an amazing 5.5 metres
- 1" and 1 1/2" (25mm and 38mm) hose connections
- Variety of installations; floor, surface or through-the-wall
- Excellent solids-handling too



HAND PISTON PUMPS

- Smooth-acting, hand piston pumps
- Long-life brass cylinders, oil-resistant plungers
- 5 models deliver up to 40 litres/min (@30 strokes/min)
- 1/2" up to 1 1/4" outlet hose sizes



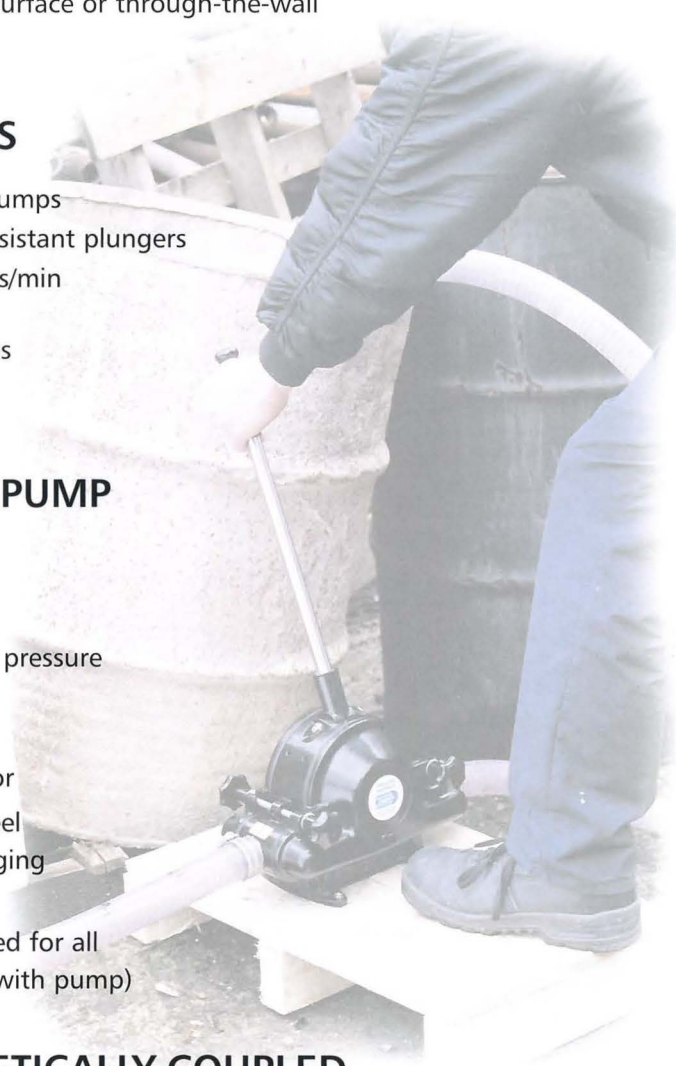
CYCLONE CIRCULATION PUMP

- 26 gpm (100 lpm) maximum flow
- High flow and high pressure versions available
- Continuously rated 3500 hour life motor
- Robust Stainless Steel body and Anti-clogging design impeller
- Only one tool needed for all servicing (included with pump)



59500 MAGNETICALLY-COUPLED CIRCULATOR PUMP

- 15 litres/min at 0.12 bar
- Magnetic Drive – sealed pump chamber
- Continuously rated
- Handles aggressive liquids and water at 100°C
- Ideal for heating/cooling system circulation



Submersible Pumps & Worklights

SUBMERSIBLE PUMPS

Jabsco and Rule submersible pumps are unrivalled in their combination of versatility, performance, reliability and value. Their small size enables them to be installed in confined spaces where water needs to be circulated or removed. They are totally sealed so they can be left permanently submerged. The electrical safety of pumps fitted with low-voltage DC motors is superior to mains-voltage pumps.

- Compact, efficient, long life motors
- Totally submersible
- Rust & corrosion protected
- Silent & vibration-free operation

Application Capability:

Flow Rates from 23 lpm to 500 lpm open flow

12, 24 and 32 V DC motors.

110V AC model (not available in Europe)

Non-automatic, Automatic and Computerised models available



WORKLIGHTS

Jabsco 12 and 24V DC lights are designed to be mounted on off-road vehicles, service vans and rescue trucks to illuminate work areas. The remote-control lights can be directed from the warmth and safety of the cab and used to inspect power lines & utility installations.



Application Capability: 135SL

100,000 candlepower = 7 lux at 100m,
0.3 lux at 500m

320° horizontal rotation, 75° vertical sweep

- Bracket & flush-mounting floodlights
- Higher power and chrome models available



62026



135SL

ACCESSORIES

The full range of Jabsco, Rule and Flojet pumps are supported by a comprehensive range of installation accessories, including:

- Inlet strainers
- Float switches
- Non-contact level control switches
- Switch panels

The ideal pump for your industry...

This table will help you to identify the products which are most commonly used in your sector. Don't forget to look at the other pages too, as you may find something which meets your specific requirements.

	page	Industrial Flexible Impeller Pumps	Bronze Flexible Impeller Pumps	Drum Emptying Pumps	Hygienic Flexible Impeller Pumps	Rotary Lobe Pumps	Refuelling Pumps	Diaphragm Pumps	General Purpose Pumps	Submersible Pumps, Worklights
	4									
	5									
	6									
	7									
	8									
	10									
	12									
	14									
	15									
Chemical suppliers and users		✓	✓	✓		✓		✓	✓	
General industry, factory plant		✓	✓	✓		✓	✓	✓	✓	
Water treatment & utilities		✓	✓	✓			✓	✓	✓	✓
Food Processing				✓	✓	✓				
Cosmetics & Pharmaceuticals				✓	✓	✓				
Dairy, beverage and soft drinks				✓	✓	✓		✓		
Construction Equipment			✓	✓			✓	✓	✓	✓
Agricultural equipment			✓	✓			✓	✓	✓	✓
OEM specialist machines		✓	✓					✓	✓	✓
Marine engineers & boat builders			✓				✓	✓	✓	✓

Jabsco products are supported by a committed, thoroughly trained Customer Sales and Service team who provide technical and commercial advice.

We are also famous for our global distribution network offering local advice and knowledge, pump selection and installation guidance, pump and spares stockholding, system design and components, complementary products and full service facilities.